



RECP #: 752724

RECORDED 5/8/2019 AT 1:14 PM BK# 2620 PG# 1766  
Debra K. Lee, CLERK OF LARAMIE COUNTY, WY PAGE 1 OF 1

# STATE OF WYOMING CORNER RECORD

(In compliance with the CORNER PERPETUATION AND FILING ACT, Wyoming Statutes, 1997 Section 33-29-140, et. seq., and the Rules and Regulations of the Board of Registrations for Professional Engineers and Professional Land Surveyors)

## NORTHWEST CORNER SECTION 22, T. 18 N., R. 62 W., 6TH P.M., LARAMIE COUNTY, WYOMING

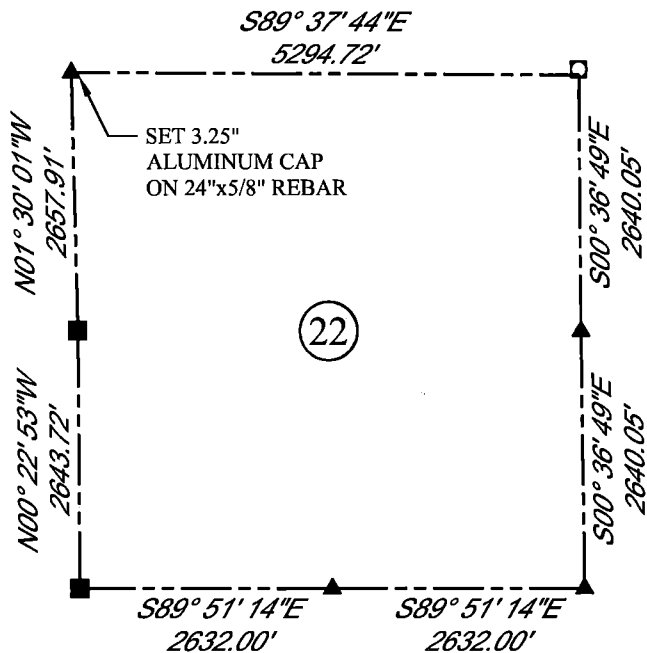
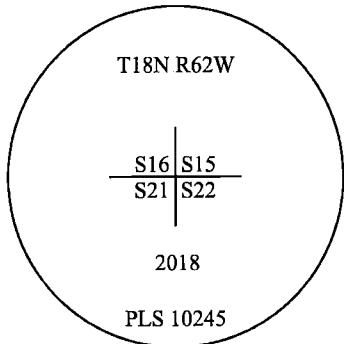
GLO: SET A SANDSTONE 16X12X6 10IN. DEEP MARKED WITH 3 NOTCHES ON S. SIDE AND 3 NOTCHES E SIDE FOR COR. TO SEC'S 15,16,21,22.

FOUND: NOTHING. SET ALUMINUM CAP AT PROPORTIONATE (DOUBLE) DISTANCE.



SCALE: NONE  
NORTH DETERMINED BY  
G.P.S OBSERVATIONS

SET 3.25" ALUMINUM CAP ON REBAR,  
AS SHOWN APPROXIMATELY 5"  
ABOVE GROUND SURFACE.



### LEGEND:

- FOUND BLM CAP
- FOUND USFS CAP
- FOUND STONE
- FOUND PRIVATE MONUMENT
- ◆ CALCULATED POSITION
- ▲ SET MONUMENT (LS10245)
- SECTION LINE

DATE OF FIELD WORK: 10/4/2018 OFFICE REFERENCE: MERIDEN

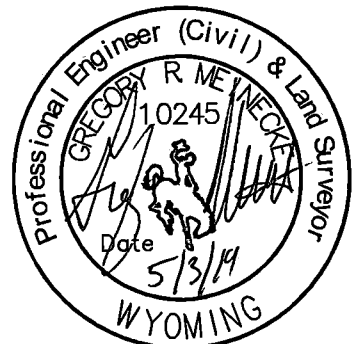
### CROSS INDEX DIAGRAM

	1	2	3	4	5	6	7	8	9	10	11	12	13	14	15	16	17	18	19	20	21	22	23	24	25	
A																										
B																										
C		6																								
D			5																							
E				4																						
F					3																					
G			7																							
H				8																						
J					9																					
K						10																				
L			18																							
M				17																						
N					16																					
O						15																				
P			19																							
Q				20																						
R					21																					
S						22																				
T			30																							
U				29																						
V					28																					
W						27																				
X			31																							
Y				32																						
Z					33																					
						34																				
							35																			
								36																		
	1	2	3	4	5	6	7	8	9	10	11	12	13	14	15	16	17	18	19	20	21	22	23	24	25	

WOOD  
2615 AVIATION DRIVE  
SHERIDAN, WY 82801  
PH: 307-675-6400



THIS CORNER RECORD WAS  
PREPARED BY ME OR UNDER  
MY DIRECTION AND  
SUPERVISION,  
SEAL AND SIGNATURE



CORNER NAME: NORTHWEST SECTION: 22 T. 18 N., R. 62 W. ; 6TH P.M. CROSS-INDEX # N-13  
SBRPELS/PLSW: MARCH 1994; PLSW JANUARY 1998